

CRT CARD READER DEMO USE MANUAL

Step 1:

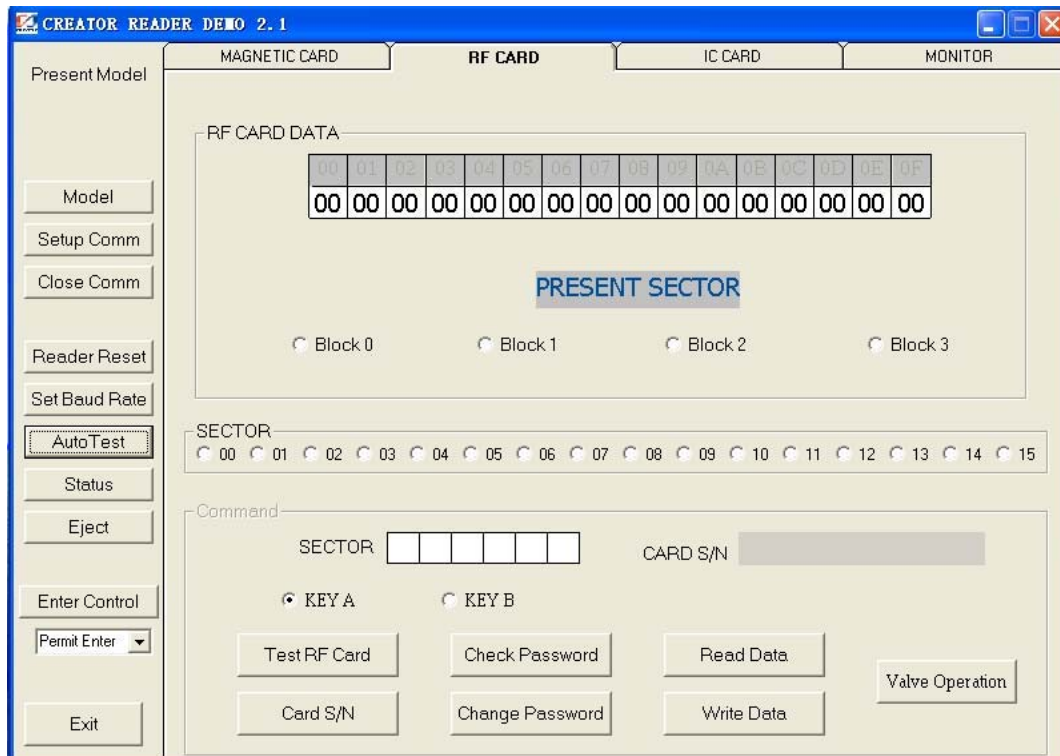
Connect the unit to your PC (Host) via RS-232 interface.

Step 2:

Power on (Motor reader, DC12V, Manual insertion reader, DC5V.)

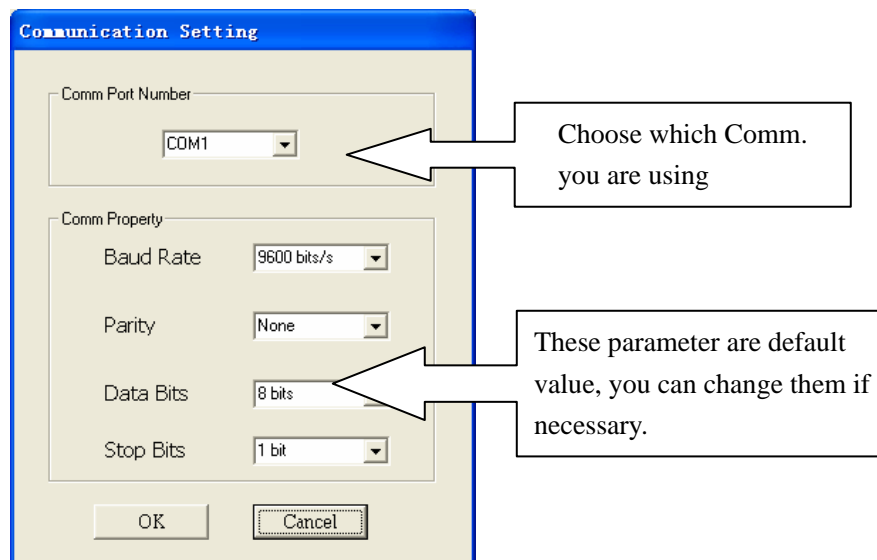
Step 3:

Open the Demo. Press “Reader” button.



Model: Press it to choose the model you are going to test.

Setup Comm: Setup the Comm.



Close Comm: Close the Comm.

Reader Reset: Reset the reader (choose to reset the reader with eject or without eject)

Set Baud Rate: Set the Baud Rate.

Auto Test: Test the card type. (For IC card and RF card)

Status: Read the status of the reader

Eject: Eject the card

Enter Control: Choose to prohibit card enter or permit card enter. (Just for motor card reader)

Exit: Exit demo

Step 4:

Press “Model” button to choose the model.

Then press “Setup Comm” to setup the Comm.

Ok, it is ready for demonstrating.

RF CARD

Insert the card into reader.

Select sector (00~15) → Check password → Select block (0~3) → Read/Write

Notice: The default password is: **FFFFFFFFFFFF**

See details in Reader Communication Protocol about the operation of KEY A, KEY B, Value operation and so on.

MAGNETIC CARD

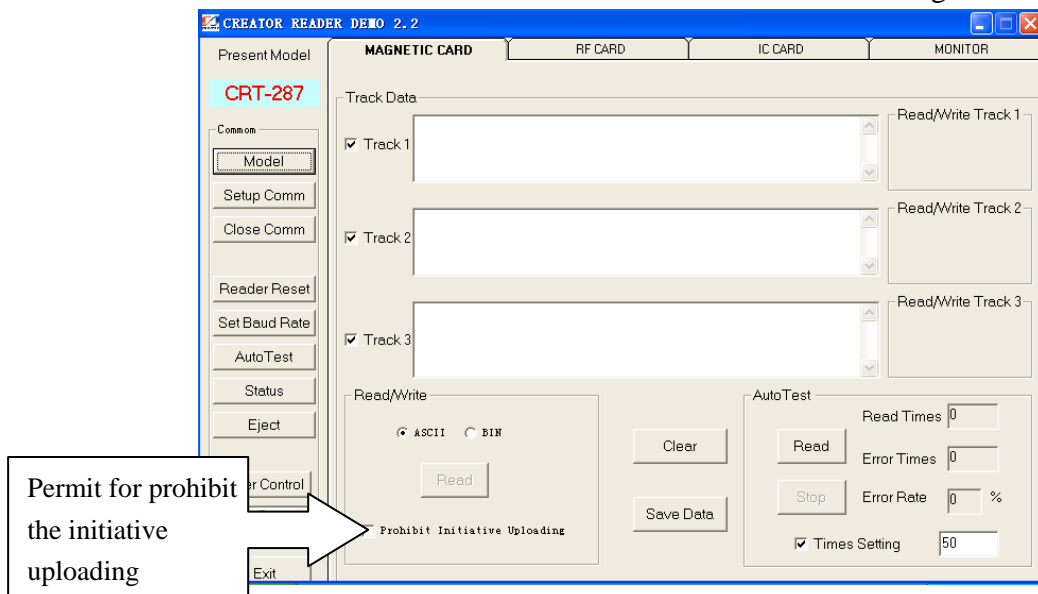
Insert the card into reader.

Press Read to read the card.

Also you can choose Auto Test to read the card automatically.

But for CRT-287, because it has no auto lock and eject function, so please make sure you insert the card fully. And it has initiative uploading data mode, so if you permit initiative uploading, you need to use the auto test function.

Do not touch the PCB board and wire connected with magnetic head.



IC CARD (CPU Card)

Insert the card into reader. Choose IC card → CPU (T=0) → CPU Card Operation

Press Reset to get the information, and then select the command or input the command and send. Check it with the returned value.

The screenshot shows a software window titled "CPU CARD" with a blue title bar. The interface is divided into several sections:

- Reset:** A button at the top left.
- Reset Information:** A text box below the Reset button, currently empty.
- Send:** A button below the Reset Information box.
- Send Command:** A dropdown menu showing a list of commands. The selected command is "00A40000023F00". The list also includes "0084000008" and "00A40000023F00".
- Returned Value:** A text box displaying the result of the command: "00A404000E315041592E5359532E4444463031".
- Power Off:** A button at the bottom left.
- Exit:** A button at the bottom right.